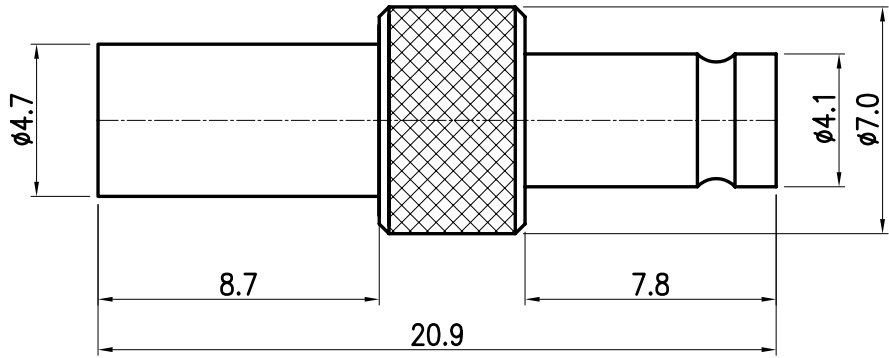


This document contains proprietary information and may not be reproduced or copied without the express written permission of a duly authorised representative of MPD.

REV	DESCRIPTION	DSG	APR	DATE



NOTE :

- Material and Finish
 - Center contact : Brass / Gold
 - Outer contact : Beryllium copper / Gold
 - Body : Brass / Gold
 - Insulator : PTFE

- Specification
 - Frequency Range : DC ~ 6GHz
 - VSWR : 1.15 : 1 Max
 - Operating Temperature : -45 ~ 120C°
 - 2002/95/EC (RoHS) : Compliant

UNLESS OTHERWISE SPECIFIED : ALL DIMS IN MILLIMETERS TOLERANCES ON DECIMALS 1 PLACE ± 0.10 ANGLE $\pm 1.0^\circ$ 1.6a 2 PLACE ± 0.05 REMOVE BURRS. BREAK SHARP EDGES				THIRD ANGLE 	
DRAW	DESIGN	CHECK	APPRO.	TITLE	
<i>JM_PARK</i>	<i>WY_CHO</i>		<i>CU_LEE</i>	ADAPTOR 50 Ohms 1.0/2.3 PLUG - 1.0/2.3 JACK	
2007. 2. 1	2007. 2. 1		2007. 2. 1	SIZE	DWG NO.
Material				SEE NOTE 1.	A4
Finish				SEE NOTE 1.	H8003-110
				REV	A
Scale : NS				Do Not Scale Drawing	
				1 of 1	