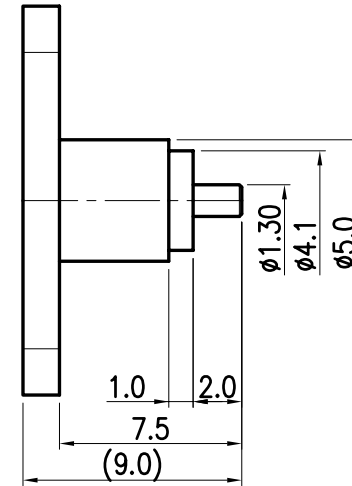
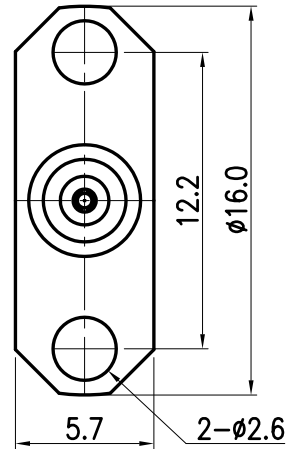


This document contains proprietary information and may not be reproduced or copied without the express written permission of a duly authorised representative of MPD.

REV	DESCRIPTION	DSG	APR	DATE



NOTE :

- Interface : CECC 22220
- Material and Finish
Center contact : Brass / Gold
Body : Brass / Ternary-alloy
Insulator : PTFE
- Environmental data
Operating Temperature : -45 ~ 120C°
2002/95/EC (RoHS) : Compliant

<small>UNLESS OTHERWISE SPECIFIED : ALL DIMS IN MILLIMETERS TOLERANCES ON DECIMALS 1 PLACE ±0.20 AGGLE ±1.0° 1.6q 2 PLACE ±0.10 REMOVE BURRS. BREAK SHARP EDGES</small>				<small>THIRD ANGLE</small> 	 MPDdevice <small>MICROWAVE PASSIVE DEVICE</small>
DRAW	DESIGN	CHECK	APPRO.	TITLE	
<i>JM_PARK</i>	<i>WY_CHO</i>		<i>CU_LEE</i>	MCX JACK 2H CONNETOR PANEL MOUNT (1.0-2.0)	
2006.12.12	2006.12.12		2006.12.12		
Material	SEE NOTE 2.			SIZE	DWG NO.
Finish	SEE NOTE 2.			A4	M4002-310
				REV	A
Scale : NS Do Not Scale Drawing				1 of 1	